

How to Add an Epson Laser Printer in Windows 10

Follow this procedure to add your Epson Laser Printer in Windows 10. You do not need to download and install a driver as they are included with Windows 10 or through Windows Update.

If the printer was previously installed before upgrading to Windows 10, you might need to right click the printer icon and choose Remove Device before following this procedure.

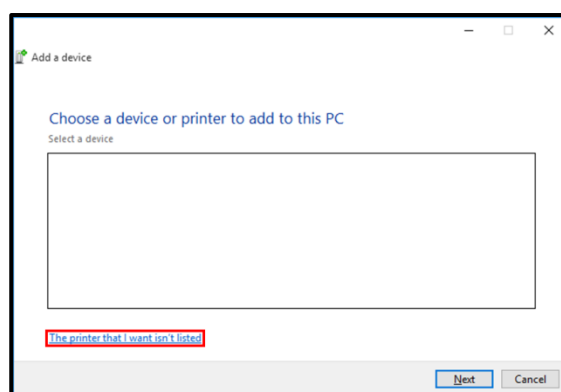
If this method fails then your printer model may not be supported in Windows 10.

Instructions

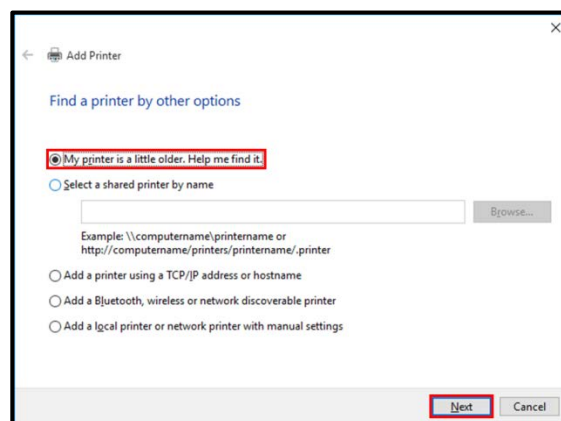
1. Open the **Devices and Printers** Control Panel. Click **Add a printer**.



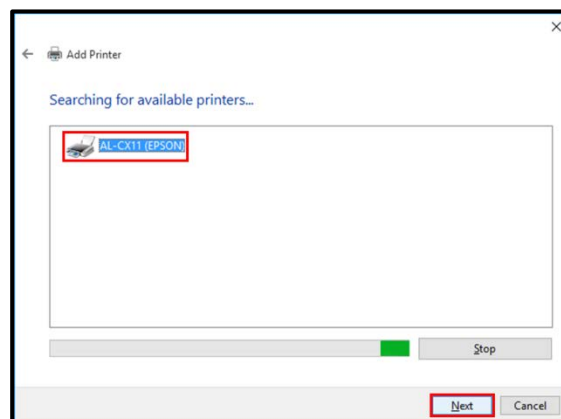
2. Click **The printer that I want isn't listed**.



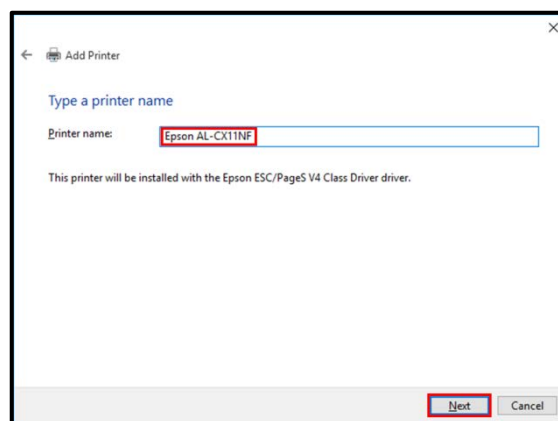
3. Select **My Printer is a little older. Help me find it**. Click **Next**.



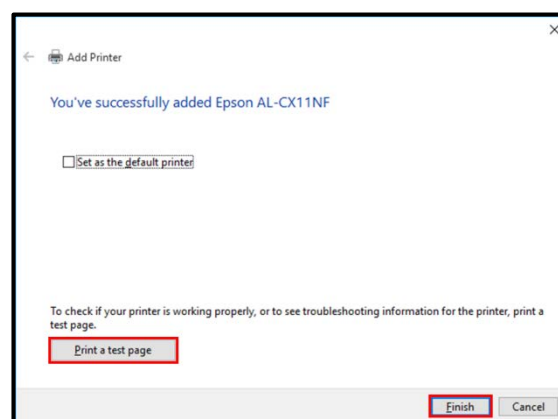
4. Click on the **printer icon** and click **Next**. If the printer is not shown [go to Step 7](#).



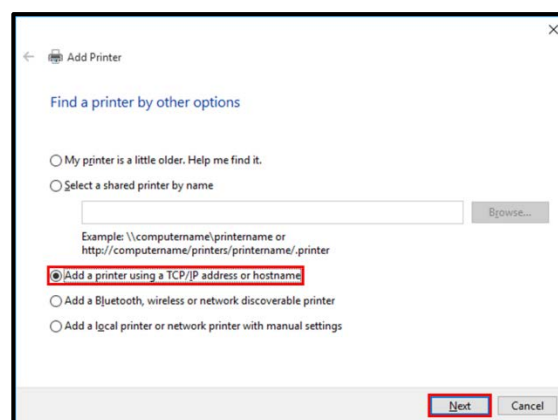
5. Enter a **name** for the printer and click **Next**.



6. Once the printer is added click **Print a test page** to confirm it is working. Then click **Finish**.



7. You can add the printer on the network using the IP address. Select **Add a printer using a TCP/IP address or hostname**. Click **Next**.



8. Enter the printer's **IP address** and click **Next**.
[Return to Step 5.](#)

